

DBE News & Events

February 20, 2020

ADOT: Public Meeting Scheduled for the SR 189 Improvement Project

Source: Arizona Department of Transportation

The **Arizona Department of Transportation** invites residents, businesses and commuters interested in learning more about the **State Route 189: International Border to Grand Avenue Improvement Project** to a public meeting Thursday, February 20th, in Nogales, Arizona.

The meeting is scheduled from 5-7 p.m. at the **Nogales High School Cafeteria**, 1905 N. Apache Boulevard, Nogales, AZ 85621. There will be a short presentation and then project team members will be available to share information about the project and answer questions.

The SR 189 (known locally as **Mariposa Road**) project will include roadway widening and intersection improvements. There will be construction of a roundabout at SR

189 and Target Range Road and two flyover ramps connecting SR 189 with Interstate 19. The project will also include drainage improvements and new traffic signals and signs.

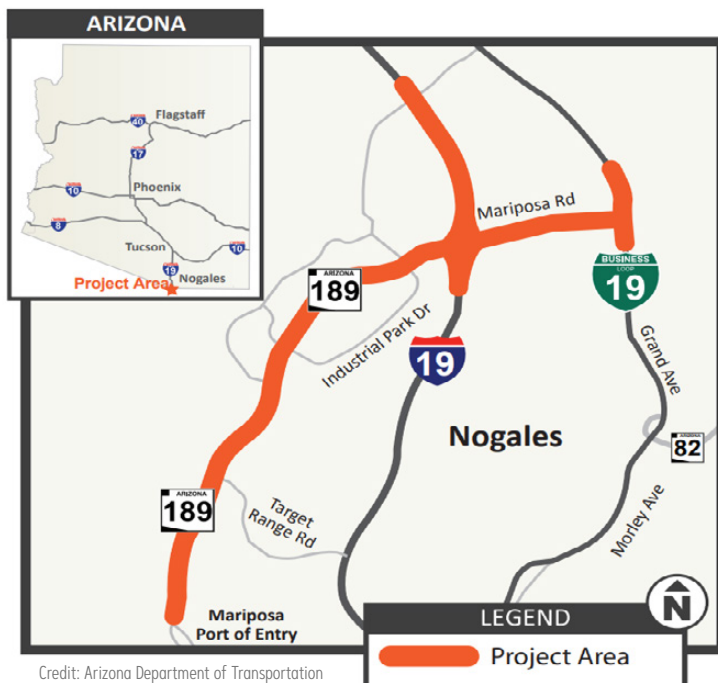
For more information:

Visit the project web site and sign up for project emails and traffic alerts at azdot.gov/stateroute189

Mail written questions or comments to ADOT Communications, 1221 S. Second Avenue, Tucson, Arizona 85713

Visit azdot.gov/contact and select Projects from the drop-down menu to submit a question or comment online.

Call the Bilingual ADOT Project Information Line at 855.712.8530



Credit: Arizona Department of Transportation

NEWLY DBE CERTIFIED FIRMS

- **Garr Pro Haulers LLC**
- **Black Iron Steel, LLC**
- **Dal Media Solutions Inc.**
- **AGE General Engineering Company, Inc**
- **Project Prominence LLC**



Enamul Hoque named ASCE Life Member

On February 12, Enamul Hoque, PE, president and owner of Hoque & Associates, was awarded the American Society of Civil Engineers (ASCE) Life Member certificate for his commitment to the Civil Engineering profession for the past 30 years.

ASCE Life Members are the most experience and knowledgeable membership segment of the ASCE and contribute significantly to the organization and growth of young professionals. Life Members are active mentors to the upcoming generation of civil engineers. Through ASCE, Life Members connect with university students to foster professional growth. The ASCE Phoenix Branch, in conjunction with Life Members, awards a scholarship to ASCE student members.

Enamul Hoque currently serves as chair of the ADOT DBE Professional Services Task Force, which addresses barriers to entry for small, minority, and women-owned consulting firms on transportation projects. Hoque & Associates is a certified DBE firm in Arizona.

DBE News & Events

February 20, 2020

ADOT to Host Small & Disadvantaged Business Transportation Expo

Source: Arizona Department of Transportation

The **Arizona Department of Transportation** and partner agencies will hold an event Thursday, March 12th, highlighting project opportunities to owners of small businesses and companies qualifying for the agency's **Disadvantaged Business Enterprise** program.

The **2020 DBE & Small Business Transportation Expo**, scheduled for 7 a.m. to noon at **Glendale Civic Center**, will allow attendees to network with industry professionals and business owners and hear from transportation leaders including featured speaker ADOT Director John Halikowski. Also participating are the **Phoenix Public Transit** and **Street Transportation** departments, **Valley Metro**, the **Maricopa County Department of Transportation** and **Phoenix Sky Harbor International Airport**.

ADOT's Disadvantaged Business Enterprise program helps qualifying small businesses compete for federally assisted contracts. The companies must be owned by individuals from socially and economically disadvantaged groups, including women and minorities.

To register for this free event, please visit adotdbeexpo.com.

Although the expo is geared toward Disadvantaged Business Enterprises and small businesses, it's open to all businesses, public agencies, vendors and community partners with an interest in the transportation industry.

For more on this event or ADOT's Disadvantaged Business Enterprise program, please contact the ADOT Business Engagement and Compliance Office at 602.712.7761 or visit azdot.gov/dbe.



**NAVIGATING
[TRANSPORTATION]
THROUGH 2020**

\$35M Requested for Riggs Road Improvements

Source: inMaricopa.com

A state lawmaker from Maricopa is taking a direct route to fund an overpass on **State Route 347** across Riggs Road.

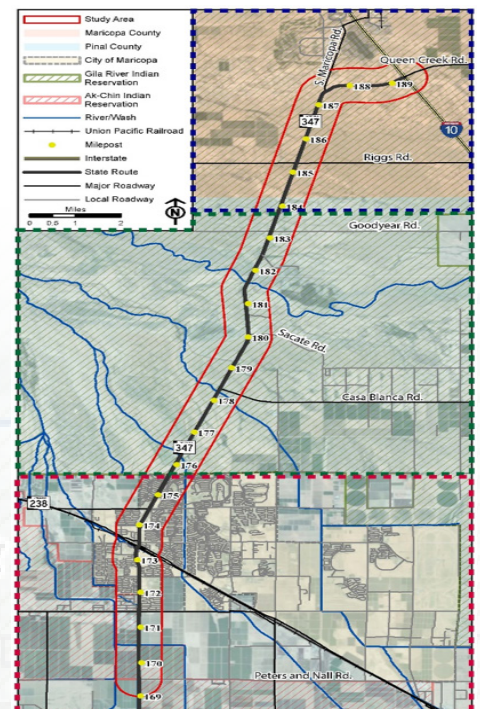
Rep. Bret Roberts is the primary sponsor of **House Bill 2802**. The brief text of the bill asks for the allocation of \$35M for the construction. If passed, the money would be appropriated from the general fund for fiscal year 2020-21.

Roberts cited the continuing growth of Maricopa, and the projected population of 124,000 in 20 years, as his reasons for taking the matter to the Legislature.

At the same time, Pinal County is studying solutions for the high-volume roadway as

Maricopa Association of Governments builds a coalition that includes **Arizona Department of Transportation**, **Gila River Indian Community**, **City of Maricopa** and **Pinal County**. Funding for any resulting improvements is being collected through the county's **Prop 417** by the **Regional Transportation Authority**. That recently won a suit in appellate court but awaits the possibility of an appeal to the state Supreme Court.

Read more at inMaricopa.com.



Credit: inMaricopa

Business & Industry Events

February 20, 2020

February

21

ABA 2020 Chairman's Installation Dinner & Auction

Location: 860 N Riverview, Mesa
Time: 5:30pm-9:00pm

25

AAED: Economic Development Hacks

Location: 4215 Arts Village Drive, Sedona
Time: 9:30am-1:15pm

25

ACEC: Street Transportation Update

Location: 532 W McDowell Rd., Phoenix
Time: 7:30am-9:30am

March

6

19th Annual Contractor's Golf Classic

Location: 2400 E Missouri Avenue, Phoenix
Time: 6:30am-2:30pm

18

Disparity Study Draft Results Meeting

Location: 206 S 17th Avenue, Phoenix
Time: 1:00pm - 2:00pm

19

USACE LA District AZ Business Opps. Open House

Location: 3636 N Central Ave., Ste. 805, Phoenix
Time: 8:30am-12:30pm

19

LAI: Planned & Future Expansion of Fwy Systems

Location: 11500 N Hayden Rd, Scottsdale
Time: 11:30am-1:00pm

26

MPA:Cocktails & Connections

Location: 4450 N 12th St., #228, Phoenix
Time: 5:00pm-7:00pm

April

2

ABA Member Mixer

Location: 2210 S Roosevelt St., Tempe
Time: 4:00pm-6:00pm

ADOT/
BECO

Other
Associations

****ATTENTION TO ALL FIRMS****

Need help preparing DBE Affidavits?

Please see our tutorial video below:

"Preparing DBE Affidavits"



ADOT's Business Development program is designed to provide DBEs with general and firm-specific training and technical assistance to help them to become more competitive within the transportation industry. This program will give DBE firms an opportunity to gain a competitive edge within and outside the highway industry.

DEADLINE TO APPLY IS MARCH 26, 2020

APPLY HERE

**BUSINESS
DEVELOPMENT**



SAVE THE DATE

May 20-22, 2020

Arizona Biltmore, Phoenix AZ



SAVE THE DATE

April 13-15, 2020

201 W Butler Ave., Flagstaff

ADOT DBE & SMALL BUSINESS TRANSPORTATION EXPO



REGISTER HERE



Project Opportunities

February 20, 2020

Links

[ADOT Current Advertisements](#)

[ADOT Engineering Advertisements](#)

[ADOT Public-Private Partnership Initiatives](#)

[ADOT Advertised Alternative Delivery Projects](#)

[Bidding Opportunities Around the State](#)

Did You Know?

Nogales, Arizona, borders the city of Nogales, Sonora, Mexico, south of Tucson and Interstate 10. With Arizona ranked first in the nation in projected job growth and economic growth prospects, and Nogales listed as the #1 Port of Entry in the entire Southwestern United States, it's no wonder Nogales is a great place to do business. Today's cover story features just one of the many project planned in the area.

Nogales has a population of just over 20,000, and is part of the larger Tucson-Nogales combined statistical area, which boasts a total population over 1 million. The city of Nogales is the county seat of in Santa Cruz County, Arizona.

The name Nogales means "black walnuts" in Spanish, and the walnut trees which once grew abundantly in the mountain pass between the cities of Nogales, Arizona, and Nogales, Sonora, can still be found around the town.

For more information about projects in Nogales and southern Arizona, visit the Southcentral District Project page.

<https://azdot.gov/projects/southcentral-district-projects>

Featured Federal-Aid Projects

General / Subcontractors Opportunities

Due Date	Project Valuation	DBE Goal	Solicitation / Project Number	Type	Project Owner and Description	Contact
2/21/20 11am MST	\$360K	6.11%	TEA-ITO-0(204)T; SL69801C	IFB	ADOT - Construct Multi-Use Pathway Re-Bid, San Xavier Road: Little Nogales Drive to I-19, San Xavier District of the Tohono O'odham Nation. The work consists of constructing a new asphaltic concrete pathway & concrete sidewalk, landscaping, signing & striping.	Kristin Huston, Engineering Specialist, khuston@azdot.gov or Daniel Casmer, Construction Supervisor, at dcasmer@azdot.gov
2/21/20 11am MST	\$1.4M	6.57%	089-A(212)T; F027501C	IFB	ADOT - Chip Seal, Walden Blvd - Ponderosa Park Rd, Wickenburg-Prescott Hwy (SR 89). The work consists of the application of chip seal coat, including pavement markings.	Jalal Kamal, Engineering Specialist, at Jkamal@azdot.gov or Kara Lavertue, Construction Supervisor, at KLavertue@azdot.gov
2/28/20 11am MST	\$2.2M	2.78%	NHPP-069-A(220)T; F027401C	IFB	ADOT - Pavement Rehabilitation, Main Street - Prescott Lake Pkwy, Cordes Junction-Prescott Hwy (SR 69). The work consists of repairing asphaltic concrete pavement spots by microsurfacing & applying fog coat, including milling & filling & pavement marking. DBE Goal of 2.78%.	Farhana Jesmin, Engineering Specialist, at FJesmin@azdot.gov or James Bramble, Construction Supervisor, at JBramble@azdot.gov
3/27/20 11am MST	\$1.3M	6.07%	180-A(205)T; F006001C	IFB	ADOT - Construct Turn Lanes, B-40 & Aspen Ave, Flagstaff-Valle Hwy (US 180). The work consists of widening by adding turn lanes using Portland Cement Concrete Pavement, installation of curb & gutter, sidewalk, sidewalk ramps, storm drainage pipes, catch basins, traffic signals, pavement markings, & landscaping.	Ghalib Mahdi, Engineering Specialist, at GMahdi@azdot.gov or Steve Monroe, Construction Supervisor, at SMonroe@azdot.gov