

Hoque & Associates, Inc.



The mission of Hoque & Associates is to strive to build lasting client relationships through commitment, communication, innovation, and quality responsive service in order to establish and maintain its current standing as a premier provider of consultants.

Hoque & Associates, Inc. (HA) is a well-established firm composed of experienced professionals determined to bring the best quality product to the client. Now well into the second decade of operations, Hoque & Associates is proud to offer geotechnical consulting services, materials testing, quality control, quality assurance, and environmental engineering services. Hoque & Associates personnel apply collective expertise to meet a series of diverse challenges proposed by clients. By combining efforts in a true show of teamwork, personnel dedicate themselves to developing practical and cost-effective solutions to some of the most difficult of engineering challenges.

Hoque & Associates has a Phoenix based office located at 4325 South 34th Street. This location is complete with a full service geotechnical lab. Most geotechnical testing services can be performed within one hundred feet of the Hoque & Associates engineering staff, so results can be quickly obtained and provided to clients.

Hoque & Associates has completed several hundred geotechnical and materials testing projects in the Phoenix area, as well as all across Arizona. Hoque & Associates has the technical expertise, direct experience, range of qualified staff, and corporate commitment to successfully complete project work on time and within budget. Hoque & Associates is dedicated to pursuing innovative ideas and technology that can save clients money and time, while still adhering to the project objectives.

MAIN OFFICE

4325 South 34th Street
Phoenix, Arizona 85040
Office (480) 921-1368
Fax (489) 921-0194

www.hoqueandassociates.com

CONTACT INFORMATION

Enamul Hoque, P.E.
President
(480) 921-1368

ehoque@hoqueandassociates.com

Certified ADOT DBE

Certified City of Phoenix SBE

Registered Engineers

Certified Field and Laboratory

CCRL & AMRL

Services

Geotechnical Exploration – Geotechnical services including: drilling monitoring and logging, soil sampling, soil testing; shallow and deep foundation analysis and recommendations; preparation of reports including rock mechanics, slope stability, pavement section design, foundation inspection; and, fatal flaw studies for landfills and waste management sites.

Construction Materials Laboratory Testing – Laboratory testing including: particle size analysis, fines content, Atterberg limits, permeability, sand equivalent, one-dimensional swell and compression or consolidation, moisture-density relationship, moisture content, and density determination for soil and aggregate materials; manufacturing and curing of test cylinders and cubes and compressive strength testing for concrete and masonry materials; and, ignition gradation, Marshall flow & stability, absorption, specific gravity, oil content, un-compacted void content, percent moisture, flakiness, fractured faces for asphaltic concrete materials.

Construction Materials Field Testing & Monitoring – Field testing services including: sand cone and nuclear gauge density, moisture content, and Proctor for soils and aggregate materials; air-voids, slump, temperature, air content, and cylinder preparation for concrete and masonry materials; and, nuclear gauge density, hot-plate and core sampling, crusher control sampling, and cold feed sampling for asphaltic concrete materials.



MAIN OFFICE

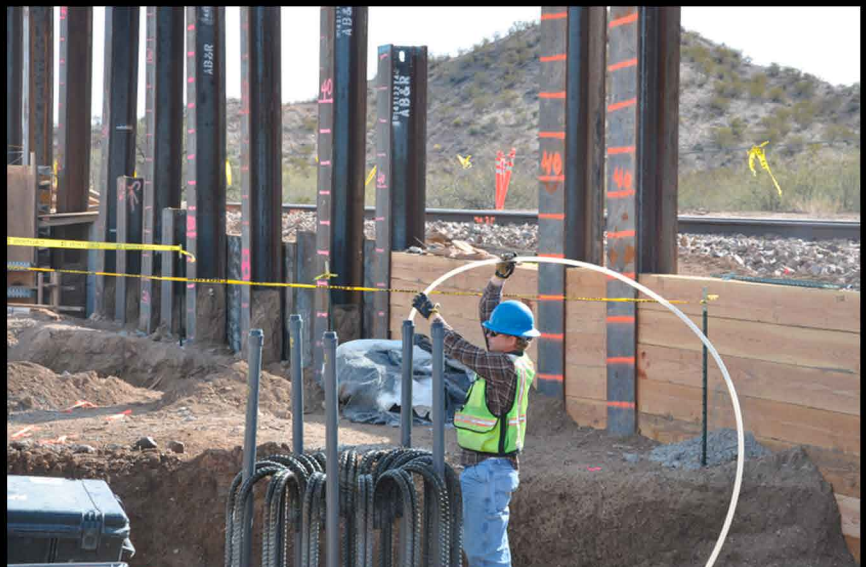
4325 South 34th Street
Phoenix, Arizona 85040
Office (480) 921-1368
Fax (489) 921-0194

www.hoqueandassociates.com

CONTACT INFORMATION

Enamul Hoque, P.E.
President
(480) 921-1368

ehoque@hoqueandassociates.com



Projects

19th Avenue Northwest Light Rail Extension - This project was the primary focus for Mr. Dwayne Culpepper. The work completed included testing soils, concrete and asphalt, as well as inspection of steel structures, drainage structures, and below ground utilities. Mr. Culpepper also provided inspection services during test runs, including inspections of electrical systems and associated features at Light Rail Stations. In addition, he also coordinated all testing work with other laboratories and city inspectors. Mr. Culpepper also reviewed and verified field reports of other personnel to ensure compliance with city requirements.

PSHIA - Sky Train Phase 1A - This project was the primary focus for Mr. Dwayne Culpepper who provided construction material testing and inspection services during construction of key features for the Phoenix Sky Train, the linking component for Light Rail and Phoenix Sky Harbor International Airport. Mr. Culpepper also provided foundation inspections and acted in support of City of Phoenix Inspectors.

Sky Harbor Air Traffic Control Tower - HA performed the Geotechnical Exploration and QC Testing and Inspection services for the Federal Aviation Administration's four story base building and 321 foot tall air traffic control tower. Geotechnical services included subsurface exploration with 12 30-50 foot deep soil borings and engineering analysis including foundation analysis for gravity. The design-build project includes design and construction of a Federal Aviation Administration (FAA) facility at Sky Harbor International Airport. HA's role comprised the geotechnical exploration and engineering report to be used in design.

West Hold Bay - HA provided consulting engineering, geotechnical exploration, and laboratory testing services during the West Hold Bay Paving and Reconstruction Project at Phoenix Sky Harbor Airport. HA provided quality control testing services for all soil/aggregate, asphaltic concrete, and Portland cement concrete used in construction of project features. This project included placement of Portland cement concrete in a 15.5" thick mat to provide a stable foundation for airplane transfers.

MAIN OFFICE

4325 South 34th Street
Phoenix, Arizona 85040
Office (480) 921-1368
Fax (489) 921-0194

www.hoqueandassociates.com

CONTACT INFORMATION

Enamul Hoque, P.E.
President
(480) 921-1368

ehoque@hoqueandassociates.com

Airport I-10 Business Park - HA provided consulting engineering, geotechnical exploration, and laboratory testing services during the preconstruction phase of this centrally located, Phoenix Project. In the first weeks of 2016 HA completed work on this commercial development. HA provided quality control testing services for all soil/aggregate, asphalt concrete, and Portland cement concrete used in construction of project features. This project included infrastructure and building construction for five new industrial buildings totaling over 1 million square feet on 55 acres.

Virgin River Bridge 6 - HA is currently providing construction material testing services for the \$27 million dollar rehabilitation project along the 29 mile stretch of I-15 located in Arizona. This rehabilitation includes work on the bridge superstructure, including the girders, deck, and railings.

STATE OF ARIZONA
BOARD OF TECHNICAL REGISTRATION

■ FIRM REGISTRATION ■

FIRM NAME
Hoque and Associates, Inc.

FIRM REGISTRATION NO.: 10268-0

FIRM ADDRESS
4325 S 34th Street
Phoenix, Arizona 85040

EXPIRES: 4/30/2018

SERVICES OFFERED
Engineer/Civil


MELISSA CORNELIUS
EXECUTIVE DIRECTOR
FOR THE BOARD

Arizona Unified Certification Program

This is to Certify that
under Title 49, Part 28 of the Code of Federal Regulations, and
under the State of Arizona Unified Certification Program (AZUCP)
Hoque & Associates, Inc. DBA Hoque & Associates, Inc.
is a Certified Disadvantaged Business Enterprise (DBE)
in the following specialty/specialties:
NAICS-541330: ENVIRONMENTAL ENGINEERING SERVICES
NAICS-541380: GEOTECHNICAL TESTING LABORATORIES OR SERVICES
Re-Certification Eligibility: November 10, 2014 to April 1, 2019
This Re-Certification is valid through the above date provided this firm meets the
on-going programmatic standard and fulfills the annual update requirement
to remain in good standing as a DBE.



Date: November 10, 2014

Esh Mulyil, Certification Program Manager
Arizona Department of Transportation, Business Engagement and Compliance Office


City of Phoenix
EQUAL OPPORTUNITY DEPARTMENT

HOQUE & ASSOCIATES INC

IS HEREIN GRANTED

SMALL BUSINESS ENTERPRISE (SBE)
CERTIFICATION

In the Area(s) of:

QC testing, construction inspection, consulting, geotechnical, materials, and landfill engineers


Trevor Bul, Management Assistant II
City of Phoenix Equal Opportunity Department