

WE CURRENTLY HAVE OPENINGS FOR THE FOLLOWING POSITIONS:



**Front Desk
Administrative
Secretary**

CAD Drafter

**Field Technician
ATTI, ACI**

**Field Engineer
and E.I.T.**

Geologist

Project Manager



SUBMIT RESUMES TO: EHOQUE@HOQUEANDASSOCIATES.COM

4325 South 34th Street
Phoenix, Arizona 85040

www.hoqueandassociates.com

O: (480)921-1368
F: (480)921-0194



ADOT UTRACS: 10508

CAGE CODE: 1XTY1

NAICS: 541330
541380

The mission of Hoque & Associates, Inc. is to build lasting client relationships through commitment, communication, innovation, and responsive service in order to establish and maintain a current standing as a premier provider of consultants, engineers and technicians.

Geotechnical – drilling monitoring and logging, soil sampling, soil testing; shallow and deep foundation analysis and recommendations; preparation of reports including rock mechanics, slope stability, pavement section design, foundation inspection; and, fatal flaw studies for landfills and waste management sites.

QA/QC – full service construction material testing laboratory with certified technical staff and full service field staff that are fully certified for aggregates, concrete, and asphalt concrete.

Environmental – landfill water and gas monitoring, phase 1 environmental site assessments, SPCC, and SWPPP.



CONTACT INFORMATION

Enamul Hoque, P.E.

ehoque@hoqueandassociates.com

4325 South 34th Street, Phoenix, Arizona 85040

P:(480) 921-1368 F: (480) 921-0194

www.hoqueandassociates.com



ADOT UTRACS: 10508

CAGE CODE: 1XTY1

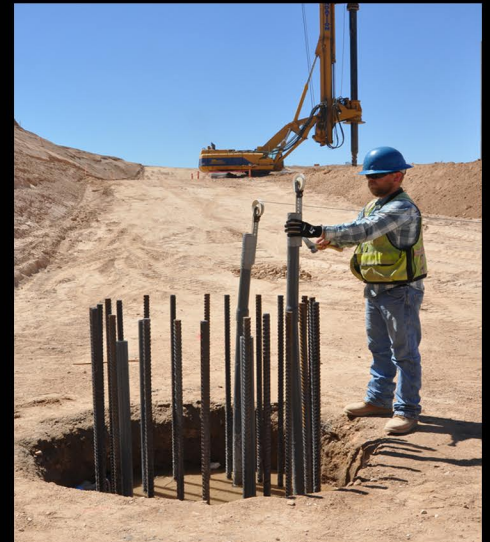
NAICS: 541330
541380

Cross-Hole Sonic Logging Gamma-Gamma Density Logging

HA provides several specialized services including integrity testing (Gamma-Gamma, Cross-Hole Sonic) for drilled shafts. These services are highly specialized within the state of Arizona, with HA currently being the only DBE/SBE firm offering these services.

HA has completed several hundred of these projects within the valley, including multiple projects within the Phoenix Sky Harbor Airport and along major Phoenix and Arizona Highways. Below are just a few of the projects completed by HA:

- City of Phoenix (AV10000001) PSHIA-PHX SKY TRAIN Stage 1 Design Project - (Terminal 4, Guideway, EEL Station, 44th Street Station) CSL & GDL shaft integrity testing on approximately 180 drilled shafts.
- City of Phoenix (AV10000011-1) PSHIA-PHX SKY TRAIN Stage 2 Design Project - (Rental Car Return) CSL & GDL shaft integrity testing
- Loop 202 South Mountain Expansion Project (ADOT TRACS H882701C) composed of a proposed 78 bridge crossings.
- SR 87/Picacho Expansion and Bridge Replacement project. (ADOT TRACS H769601C)



CONTACT INFORMATION

Cory McElprang, P.E.

cmcelprang@hoqueandassociates.com

4325 South 34th Street, Phoenix, Arizona 85040

P:(480) 921-1368 F: (480) 921-0194

www.hoqueandassociates.com